



Climate Action Initiative
BC AGRICULTURE & FOOD

BC Dairy Industry Conference

ENERGY EFFICIENCY IMPROVEMENTS FOR DAIRY FARMS

PREPARED BY: **Sam Thomas, Agriculture Energy Advisor**
ag.advisor@prismengineering.com

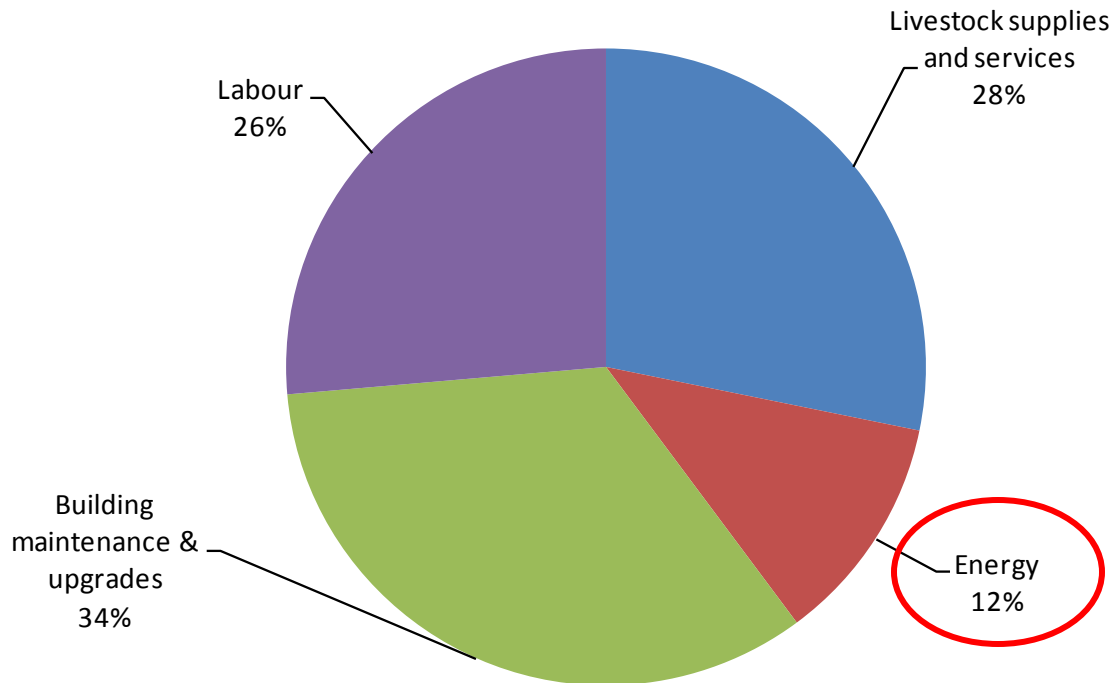
November 30th 2011

Overview

1. Background / Introduction
2. The energy context for Dairy farms
3. Common Energy Management Opportunities & Incentives
4. Implementation & the Agriculture Energy Advisor

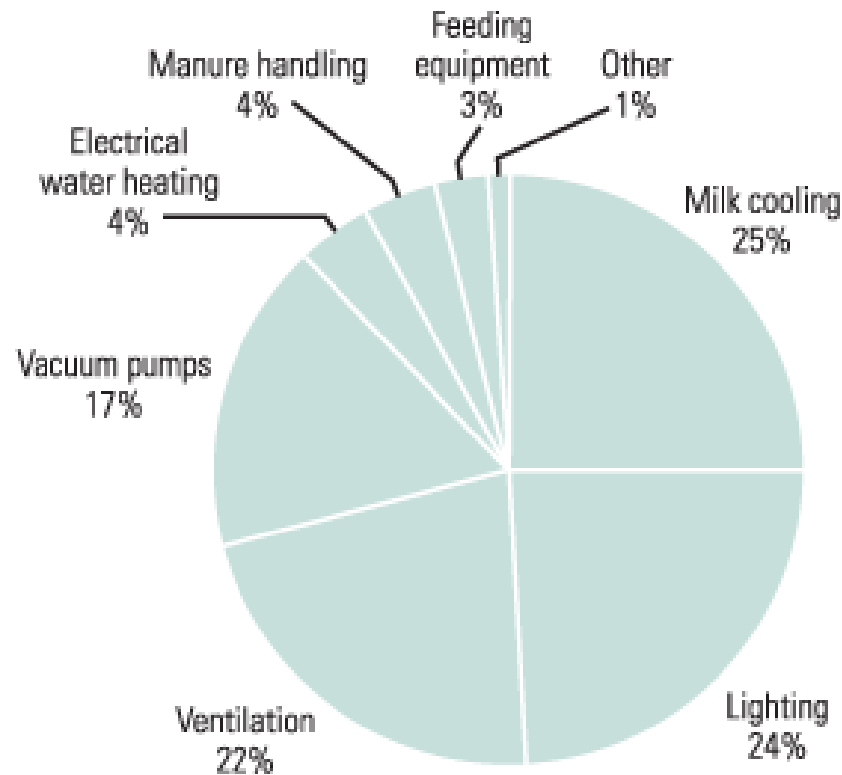
The energy context

Expenditure breakdown - Typical dairy farm



Source: BCMAFF - 2001 - Dairy - Fraser Valley 100 cow dairy operation (self grown feed)

Energy use — Electrical energy use breakdown



© E source; data from New York State Research and Development Authority Dairy Farm Energy Audit Summary

Energy Management Opportunities

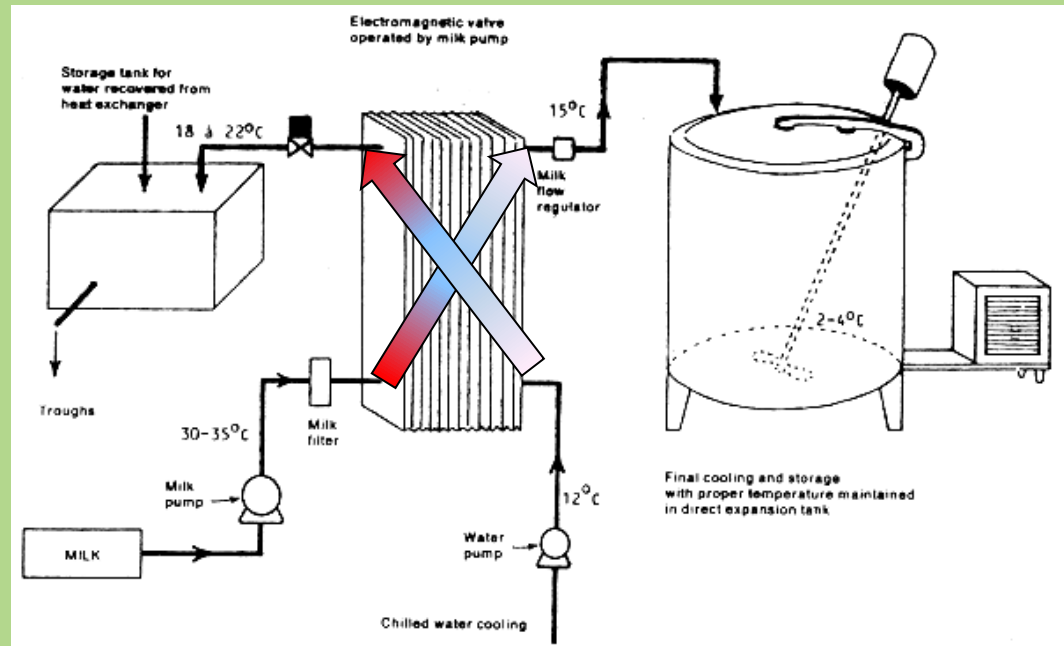
- 5 Common opportunities for BC dairy farms:
 1. Milk pre-cooler
 2. Heat recovery of refrigeration condenser line
 3. Time-clock or isolation valves on air compressors
 4. Lighting upgrades
 5. Insulation – hot water tanks and lines

1. Milk pre-cooler

- Use well water to cool milk via heat exchanger prior to milk arriving at cooling tank.
- Well water is warmed and can be used for watering troughs.

20-25% savings on compressor energy.

Around \$600/yr savings for 135 cow operation.



2. Heat recovery of refrigeration condenser line

- Recover heat from condenser side of milk refrigeration system and use to pre-heat washing water.
- Either *de-superheater* (photo below) or *full-condensing* (integrated water only – no air side)

40-50% savings on hot water heating (if no pre-cooler).

Around \$1,000/yr savings for 135 cow operation (nat. gas heating)

INCENTIVES:
-BMP (Env. Farm Plan)*



3. Time-clock or isolation valves on air compressors

- Air compressors often run unnecessarily, especially if there are leaks.
- Installing a time-clock or automatic isolation valves on air compressors can be cost effective.

5-25% savings on air compressor energy.

\$500/yr savings for a 130 cow operation visited.



4. Lighting upgrades

- Replace incandescent lamps with compact fluorescents or LED.
- Replace T12 (fat) fluorescent lamps with T8 or T5 (skinny) lamps.
- Use natural lighting whenever possible.

INCENTIVES:

- BC Hydro
- BMP (Env. Farm Plan)

Savings are variable. Lighting accounts for around $\frac{1}{4}$ of electricity bill in typical dairy barn. If 25% lighting energy can be saved, this is 6% of total electricity bill (\$500 for typical).



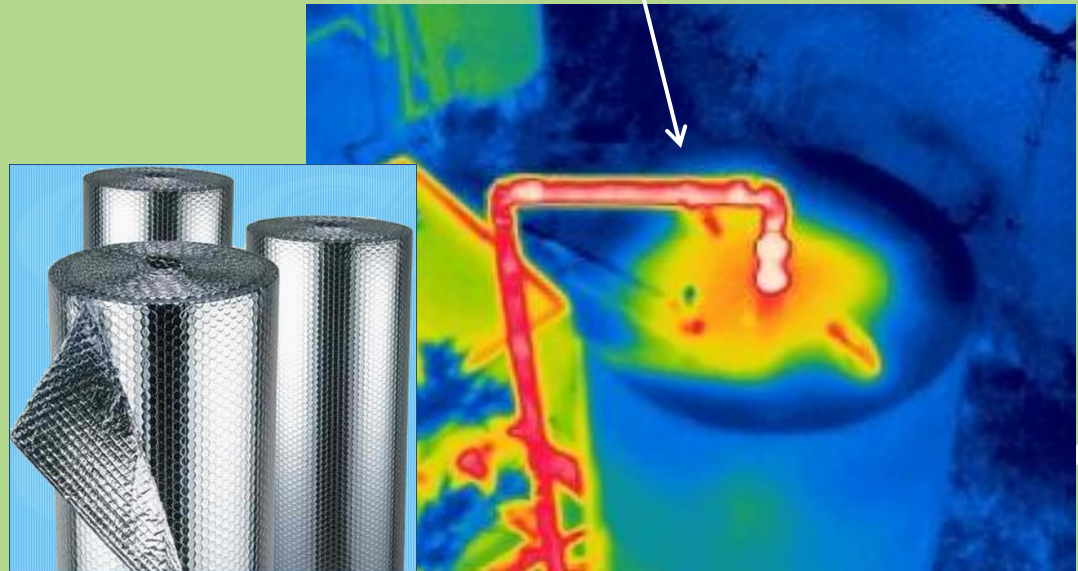
5. Insulation – tanks and lines

- Insulation of hot water tanks and pipes
- Insulation of refrigeration lines
- Insulation of milk storage tank

INCENTIVES:
-BMP (Env. Farm Plan)*

Savings will vary.
5-10% of heating energy for pipe insulation.
20-30% of heating energy for HW tank insulation.
15-25% of cooling energy for milk tank insulation.

Un-insulated hot water pipe



Take home list...



- 10 quick wins, zero/low cost, [no excuse!](#)
 1. Ensure hot water heating set-points are as low as possible;
 2. Repair dripping hot water faucets;
 3. Ensure air-cooled condensers are clean and free of obstructions;
 4. Check vacuum levels and reduce if possible;
 5. Repair compressed air leaks;
 6. Install time-clocks on air compressors (low cost);
 7. Turn out lights when not needed;
 8. Livestock waterer – do not heat above 5-8 degC
 9. Check for loose or worn pump/fan belts and tighten or replace;
 10. Clean dirty fan blades.

BC Hydro
incentive

Next steps...



To reduce energy costs at your facility:

1. Start by having a **Farm Energy Assessment** (FEA) conducted – contact your Environmental Farm Plan Planning Advisor to apply.
2. **Implement non-capital** and simple opportunities immediately.
3. **Prioritize** capital-intensive opportunities based on which options present the best business case.
4. **For technical assistance and a point of contact on any issues relating to project implementation, financial analysis, and energy savings, contact the Agriculture Energy Advisor (myself)**
5. **Access incentive funding** where available. Contact the following people to access incentive funding where available:
 1. Agriculture Energy Advisor (myself) - Any incentive queries, including BC Hydro & Fortis BC.
 2. Environmental Farm Plan Planning Advisors – BMP related funding.
6. **Implement capital** opportunities.
7. Enjoy your cost savings and environmental benefits

Project partner acknowledgements:

- **BC Farm Energy Assessment Pilot projects**
 - Completed in summer of 2011
 - Funding provided by: Fortis BC, BC Hydro, Investment Agriculture Foundation of BC
 - Other project partners: ARDCorp, BC Ministry of Agriculture
 - Project development and implementation through the BC Agriculture Council's Climate Action Initiative
- **Farm Energy Assessments**
 - Cost share funding for assessments (up to \$2,500 available per assessment)
 - Made available through the through the Environmental Farm Plan & Beneficial Management Practices Programs (See handout for contact information)
- **Agriculture Energy Advisor**
 - Funding from Livesmart BC Small Business Program, Ministry of Energy & Mines
 - Assistance available for implementation of energy efficiency opportunities until March of 2013



Climate Action Initiative
BC AGRICULTURE & FOOD

Thank you. Questions....

Presentation available at:

www.bcagclimateaction.ca (Latest Documents)

Sam Thomas, BSc, Agriculture Energy Advisor

320 - 3605 Gilmore Way, Burnaby, BC V5G 4X5

604-205-5510

ag.advisor@prismengineering.com | www.prismengineering.com